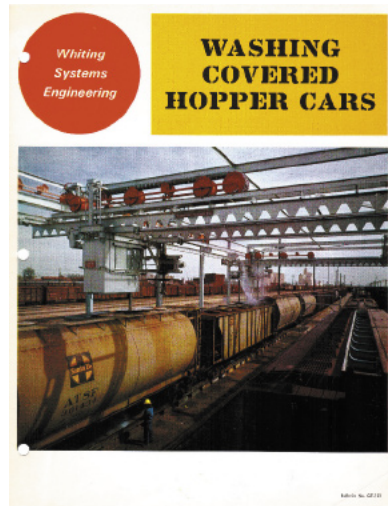
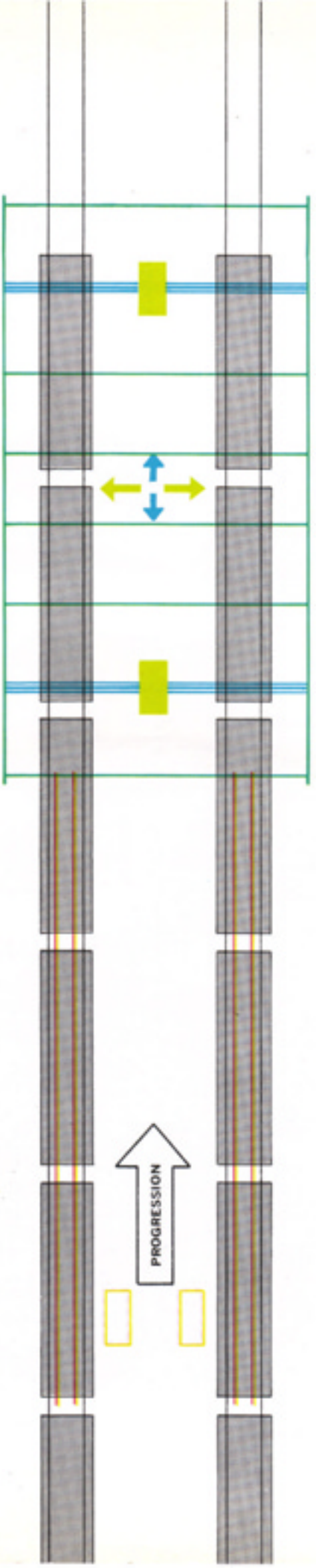




Whiting Equipment Canada Inc. Washing Covered Hopper Cars





WASHING AREA

- Cars
- Track
- Robot Tracks
- Robot counterweight towers
- Cranes & crane travel
- Trolleys & trolley travel
- Crane support girders

PROGRESSION

AT SANTA FE'S YARD in Clovis, New Mexico, the interiors of 200 covered hopper cars are now washed in one eight-hour shift by a unique new Whiting Maintenance System.

The System, as described in these pages, progresses two 48-car cuts on parallel tracks in alternate two-car increments. Automatically. And by remote control. At the washing station, two Whiting underhung cranes lower "washing wands" into the cars. Each wand is equipped with a roto jet nozzle spraying 140 gallons of water per minute through four jet outlets at 400 pounds pressure. The nozzles rotate spherically at high speed to spray every inch of the interior.

All residue of the previous cargo is flushed through the hopper discharge openings in a matter of seconds!

The 48-car cuts are moved by a Whiting ROBOT Remotely Controlled Progression System. The system features two double drum continuous wire rope car pullers with dual Robot car movers making direct axle contact. The Robot system advances each cut, alternately, in 2-car increments. While one is being advanced, the crane-mounted wands are washing two cars simultaneously on the parallel track. After each set of two cars is washed, the cranes traverse to the opposite track and the process is repeated.

The new Whiting Maintenance System assures faster, more thorough cleaning—at significantly less cost—than had been possible by any other means.



Whiting underhung cranes have lowered washing wands into first two cars visible on track at left. (Note escaping spray at top of second car.) The 48-car cut on track at right is being advanced in two-car increment by Whiting ROBOTS. Trolleys will traverse to wash cars on right track while cut on left is being advanced.



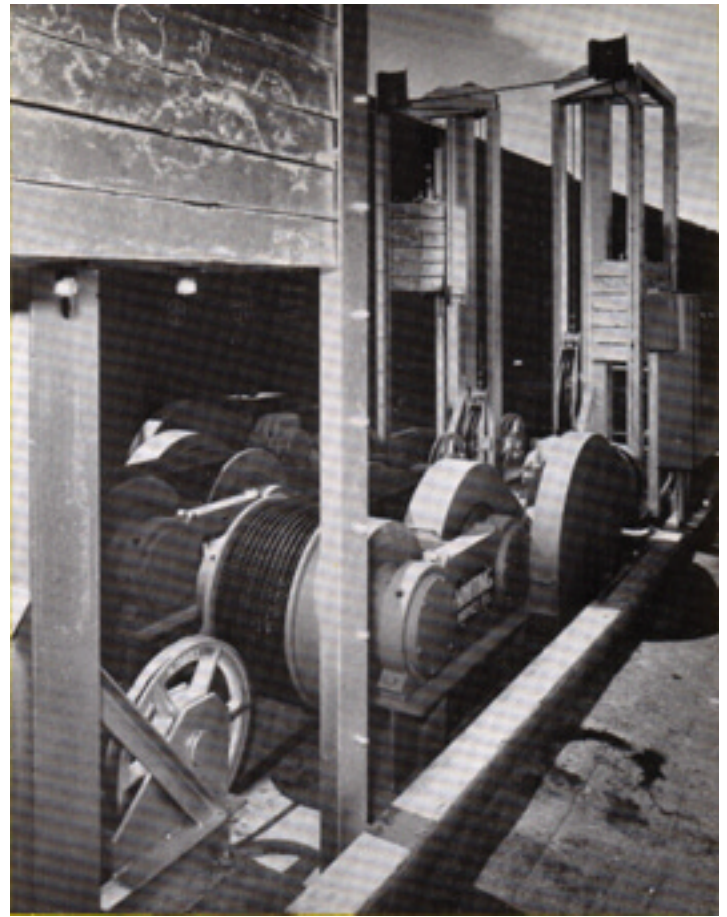
Close-up shows application of dual wand in car with double row of top openings.



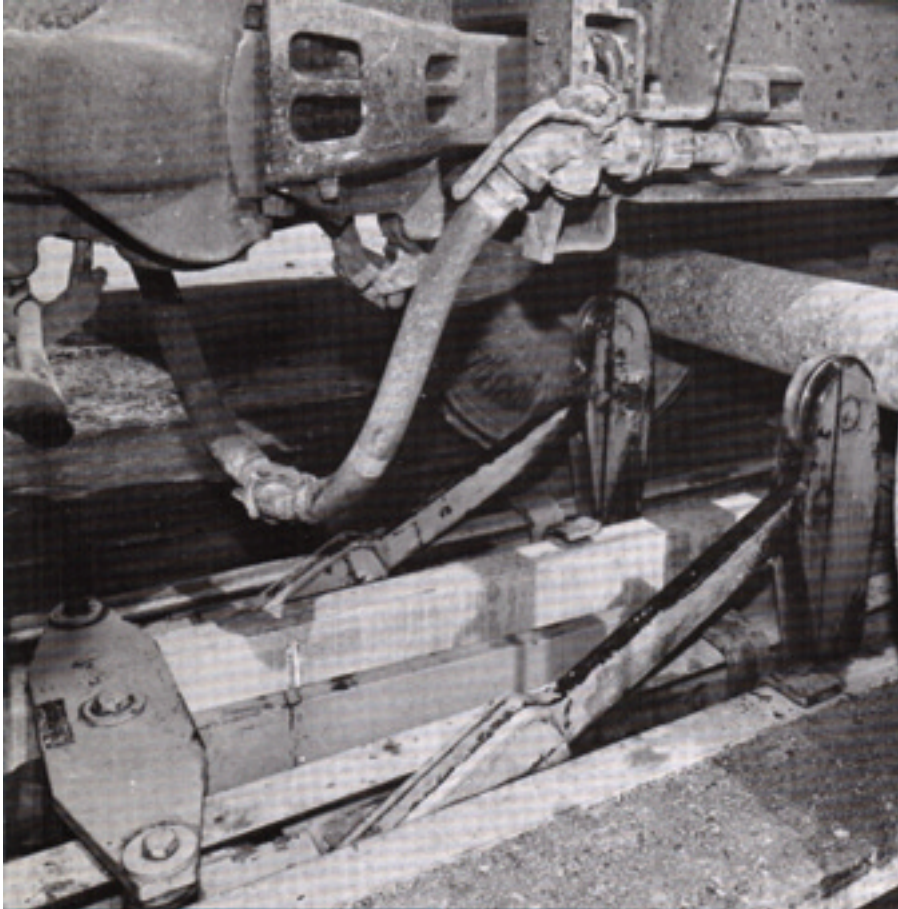
Only one wand is lowered for cars with single row of openings.



View looking in direction of car progression shows double drum continuous wire rope pullers and counterweight towers of ROBOT car progression system in foreground.



Car pullers are engineered to provide 40,000 lb. starting rope pull and 20,000 lb. running rope pull for car progression.



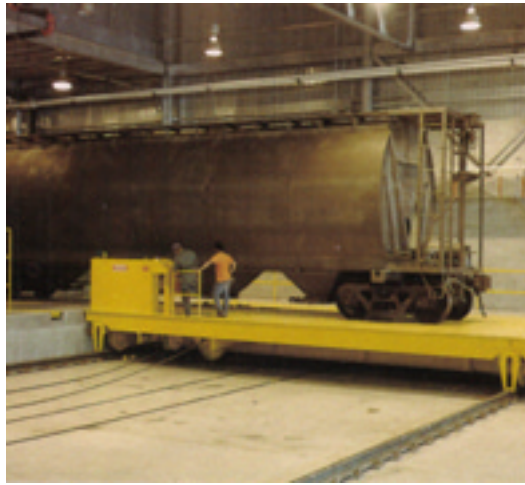
Dual ROBOT car movers exert force against axle to move 48-car cut. Robot arms retract during reverse movement and position for next increment on signal from wheel-counting device incorporated in the assembly.

WHITING MAINTENANCE SYSTEMS are cutting costs in yard operations ranging from automated "Repair in Progress" Stations to Sanding Gantries capable of filling locomotive sand boxes at rate of almost one per minute!

Some of the rugged Whiting Components used in most Maintenance Systems are pictured on the back of this brochure. The ingenuity required to tailor a system to *your* needs is available in Whiting Systems Engineering.

May we schedule a conference at your convenience?

**WHITING SYSTEMS
ENGINEERING**
*may include any of
these rugged
components...plus!*



TRANSFER TABLES



DROP TABLES



PORTABLE ELECTRIC JACKS



TRAIN WASHERS



TRACKMOBILE® CAR MOVERS



LATERALLY ADJUSTING RIP JACKS

Whiting Equipment Canada Inc.



www.whiting.ca

Richard Breznik

350 Alexander Street
Welland, Ontario L3B 2R2 CDN
Tel (+1) 905-732-7585 ext. 256
Fax (+1) 905-732-2366
E-Mail rbreznik@whiting.ca