



Arc Furnace Regulators and Controls

www.whiting.ca

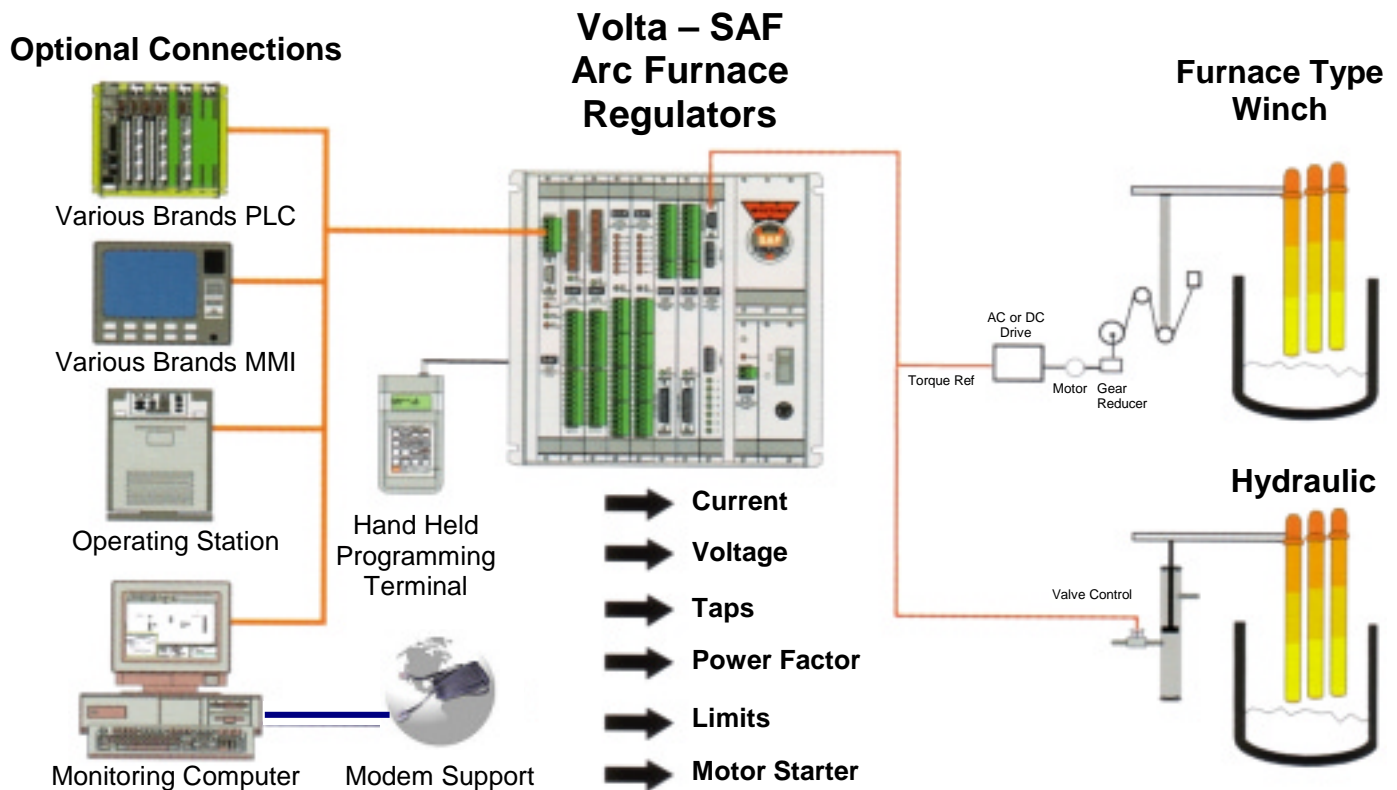
The Volta-SAF Arc Furnace Regulator is designed to provide increased "Smarts" and improved "Communication" capabilities.

Operating costs are directly related to the performance of the electrode positioning controls. The Volta-SAF EAF regulator is a rack based, high speed, digital signal processor that allows any choices of I/O cards and communication links to make it extremely adaptable for tailoring to your particular plant.

The most distinct advantage of the Volta-SAF Arc Furnace Regulation is its FLEXIBILITY that allows retrofits to be staged and have savings from one upgrade to allow further expansion of the system.

ADVANTAGES

- Limits operation to most stable window
- Wide range of power and current settings
- High response
- Reduced flicker
- Reduced electrode usage and refractory wear.
- Rapid adjustment of the arc length
- Hot and Cold Phase compensation
- Reduced electrode hunting
- Reduced energy



The Electric Arc Furnace Industry involves a marriage of various technologies such as Metallurgy, Mechanical, High Power, Controls, Electrodes and Refractory. Since 1884, we have successfully integrated these technologies into our products.



Arc Furnace Regulators and Controls

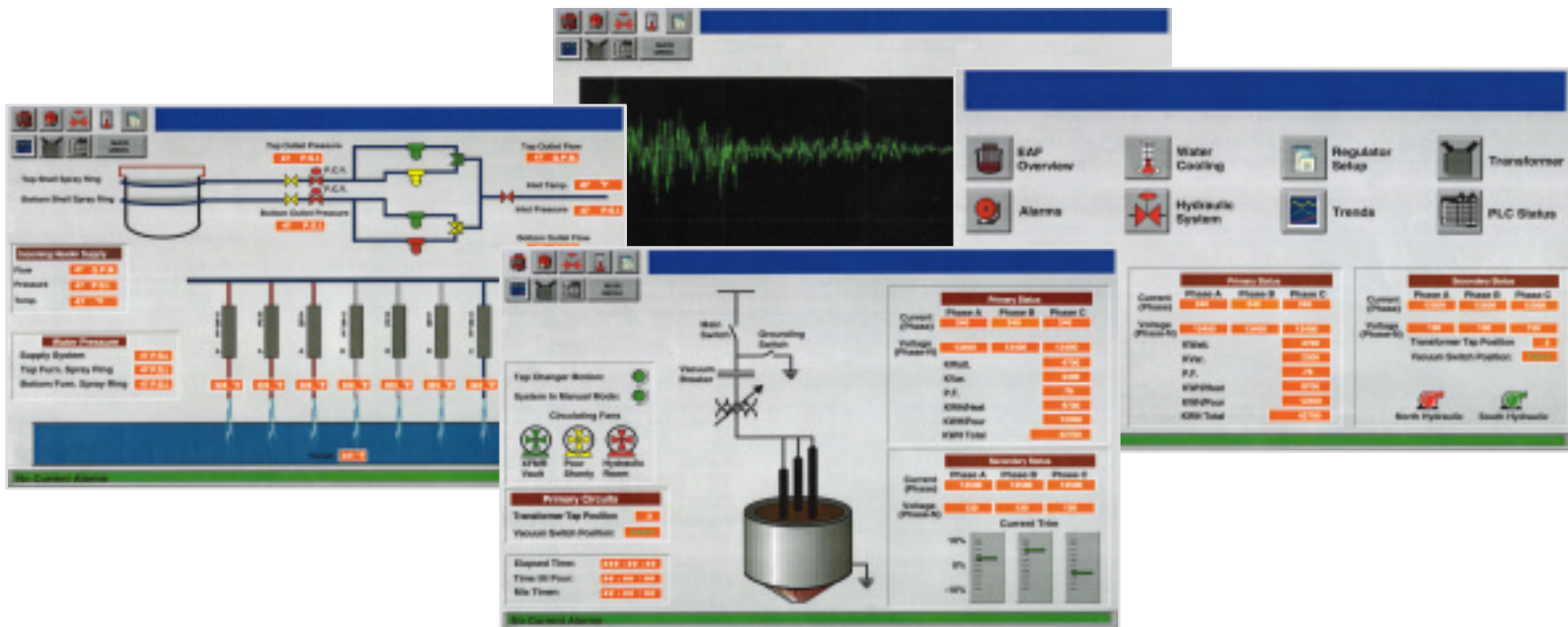
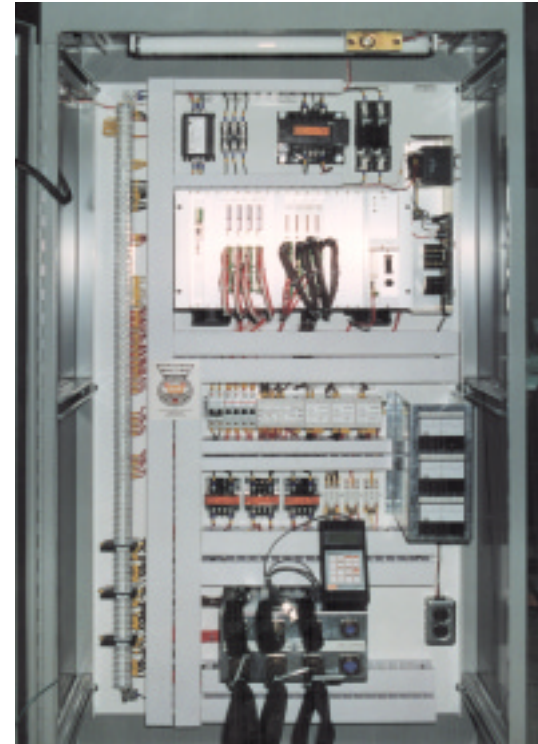
www.whiting.ca

Standard Features

- Adaptive impedance/resistance/current/voltage regulator
- Fiber optic link to DC or Direct Torque Control AC drives
- Graphic program with built in Oscilloscope
- Simple communications architecture with over 25 industrial protocols available
- Hot and Cold Phase compensation
- High response for flicker reduction, reduced electrode breakage and cave in protection.

Set-Up and Monitoring Features:

- Multiple phase status monitoring / alarm diagnostics
- Tap selection and monitoring
- Trend analysis utilization
- Power monitoring and timing
- Report/ logger
- Metering
- Simplified set-up
- Recipes for fixed design or operator modifiable set-ups
- Recipes for different charge type



Our complete line of equipment and services include:

- AC or DC Drive Winch style or Hydraulic mast positioned installation and modifications
- High performance Volta-SAF Electrode Position Regulator for significant cost savings and improved productivity
- Process monitoring and reporting (standard or customized)
- Maintenance and troubleshooting screens
- Hardwired and Computerized Operator interface
- PLC control for cooling water, hydraulics, feeders, tap changing and other melt shop operations

Our Experts:

- Analyze existing operations
- Review conditions of existing facility
- Evaluate the performance of the existing control system
- Provide advice and services to meet your goals
- Provide feasibility studies on your melt shop equipment / processes