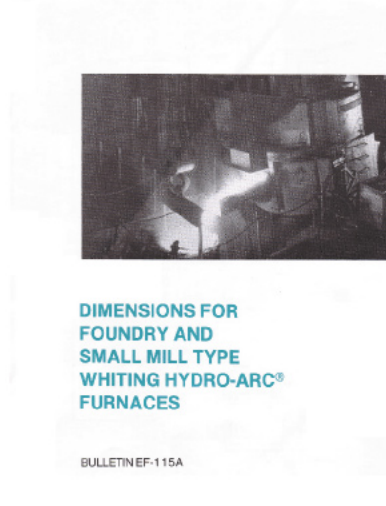
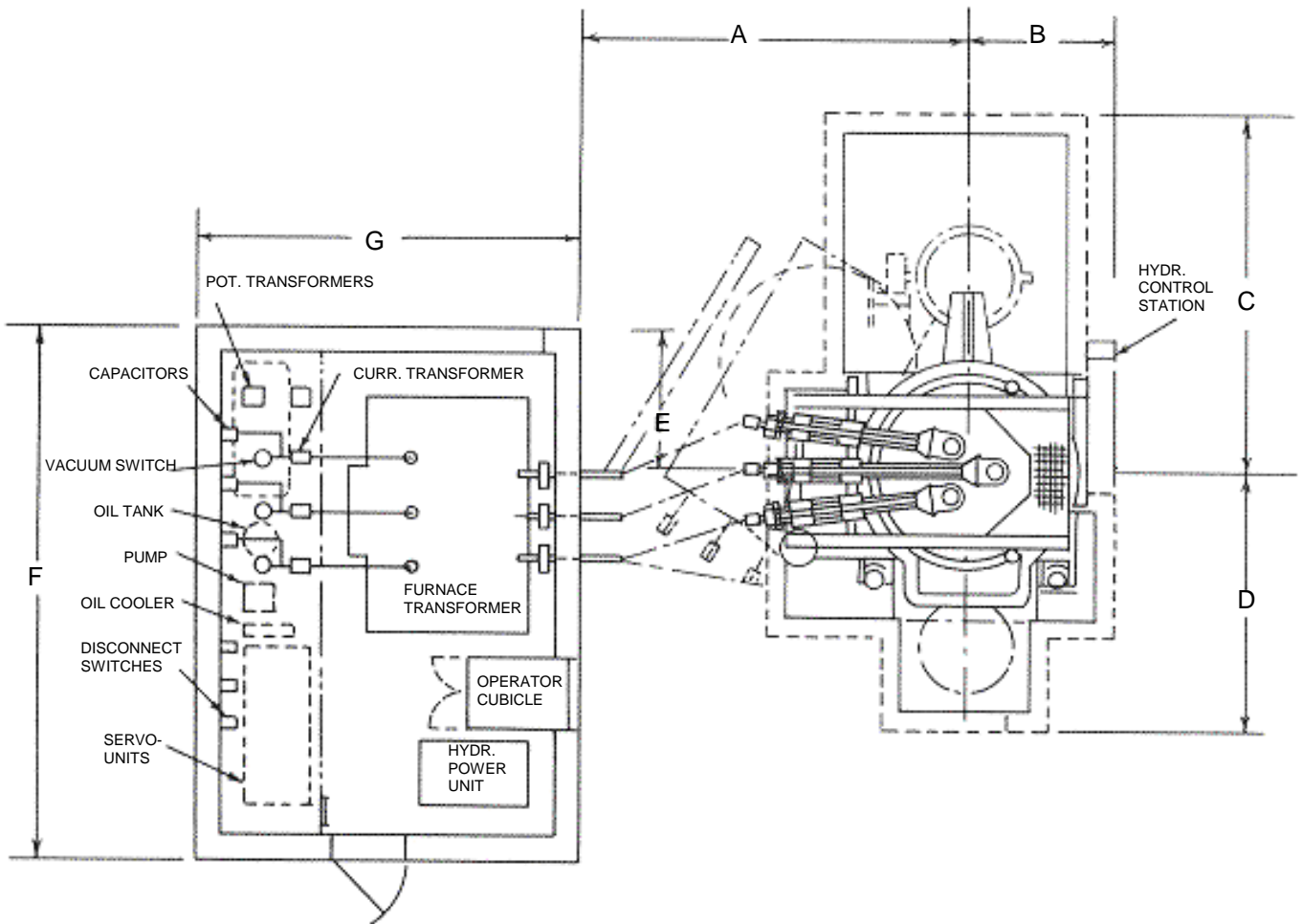
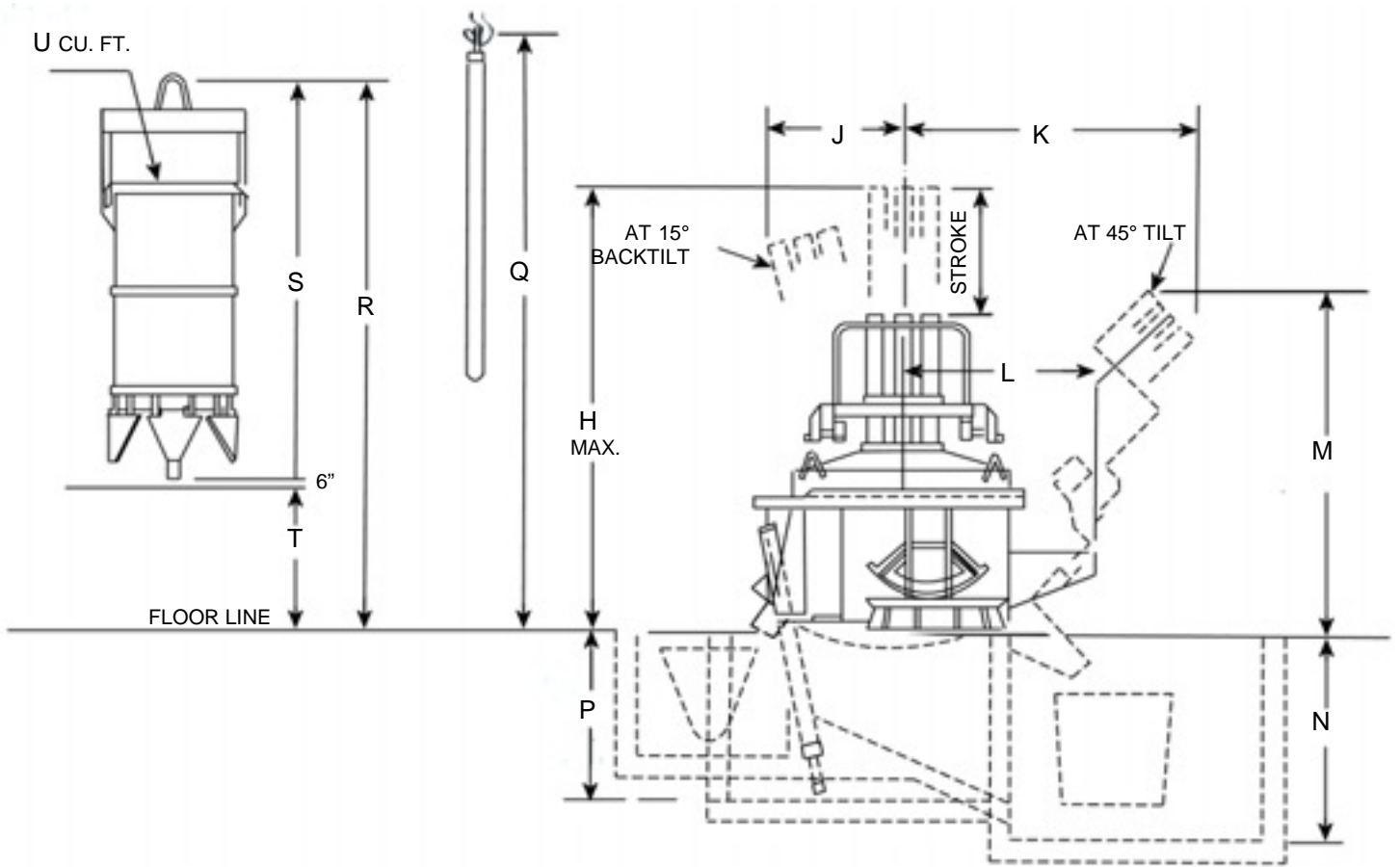




Whiting Equipment Canada Inc.
Dimensions for Foundry and Small Mill Type
Whiting Hydro-Arc Furnaces





PRELIMINARY LAYOUT DIMENSIONS FOR HYDRO-ARC INSTALLATIONS

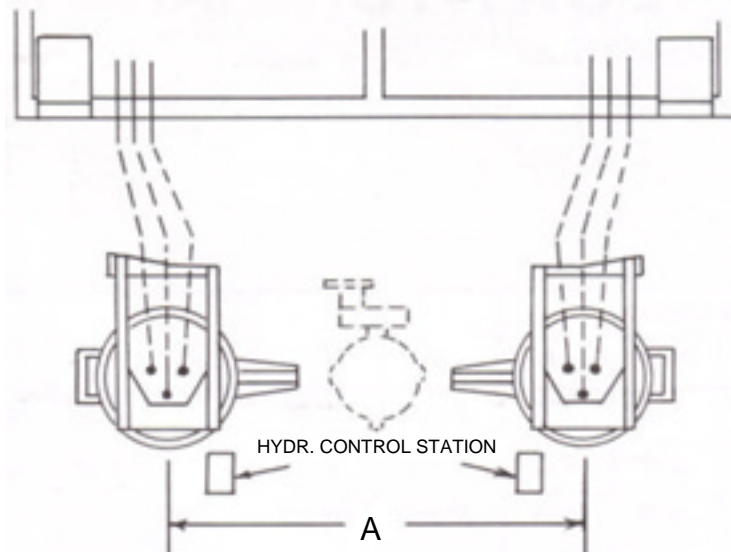
INSIDE SHELL		A	B	C	D	E	F	G	H	J	K
Dia.	Depth										
3'-4"	2'-6"	7'-3"	4'-5"	8'-2"	4'-1"	4'-3"	18'-0"	12'-0"	10'-8 ⁷ / ₈ "	2'-1"	4'-10 ¹ / ₄ "
4'-0"	3'-0"	9'-3"	4'-9 ¹ / ₂ "	9'-7"	5'-6"	4'-3"	18'-0"	12'-4"	12'-8 ¹ / ₄ "	2'-5"	6'-3"
5'-0"	3'-9"	10'-8"	5'-8 ³ / ₄ "	10'-10"	7'-2"	4'-3"	18'-0"	13'-10"	15'-3 ³ / ₄ "	3'-6"	8'-6"
5'-8"	4'-4"	11'-0"	5'-11"	11'-6"	8'-0"	4'-3"	18'-6"	13'-10"	16'-2"	3'-8 ³ / ₈ "	8'-11 ¹ / ₈ "
6'-0"	4'-6"	11'-9"	6'-1"	12'-3"	9'-0"	4'-3"	18'-6"	14'-0"	17'-5 ¹ / ₄ "	4'-2 ² / ₃ "	10'-0"
7'-3"	5'-6"	13'-6"	7'-3 ¹ / ₂ "	14'-0"	10'-0"	4'-6"	19'-0"	14'-6"	19'-4 ⁵ / ₈ "	5'-1"	11'-2"
8'-0"	6'-0"	15'-6"	7'-10"	15'-0"	10'-9"	4'-6"	19'-0"	15'-0"	20'-7 ¹ / ₂ "	5'-1 ¹ / ₂ "	12'-5"
8'-9"	6'-7"	16'-0"	8'-3"	16'-2"	11'-9"	4'-9"	19'-0"	15'-6"	21'-5 ³ / ₄ "	5'-4 ¹ / ₄ "	12'-8 ¹ / ₂ "
9'-0"	6'-9"	16'-2"	8'-5 ¹ / ₂ "	16'-9"	12'-0"	4'-9"	19'-6"	16'-0"	21'-9 ¹ / ₂ "	5'-6 ¹ / ₂ "	13'-2 ¹ / ₄ "
10'-0"	7'-6"	18'-0"	9'-3"	19'-4"	13'-0"	5'-0"	19'-6"	18'-0"	22'-11 ³ / ₄ "	5'-10 ¹ / ₂ "	14'-1"
11'-0"	8'-3"	19'-0"	9'-8 ³ / ₄ "	20'-8"	14'-0"	5'-0"	20'-0"	18'-0"	24'-9 ¹ / ₈ "	6'-5"	14'-11 ¹ / ₂ "
12'-6"	9'-4"	22'-7"	11'-9"	22'-10"	15'-6"	5'-6"	22'-0"	20'-0"	27'-6"	7'-5 ¹ / ₂ "	17'-6"
13'-4"	10'-0"	23'-0"	12'-2"	23'-10"	16'-6"	5'-6"	22'-0"	20'-0"	28'-10"	8'-2"	18'-6 ¹ / ₂ "

INSIDE SHELL		L	M	N	P	Q	R	S	T	U	CU. FT.
Dia.	Depth										CU. FT.
3'-4"	2'-6"	3'-8"	7'-9"	2'-3"	2'-3"	12'-2"	11'-6 ¹ / ₄ "	6'-10"	4'-2 ¹ / ₄ "	8	
4'-0"	3'-0"	4'-5"	9'-3"	3'-0"	3'-0"	14'-2 ¹ / ₄ "	13'-10"	8'-10 ³ / ₄ "	4'-5 ¹ / ₄ "	15	
5'-0"	3'-9"	5'-3"	10'-11"	4'-0"	4'-0"	17'-4"	15'-1 ³ / ₄ "	10'-0"	4'-7 ³ / ₄ "	27	
5'-8"	4'-4"	5'-6"	11'-5 ⁵ / ₈ "	5'-3"	4'-6"	18'-6"	15'-6 ³ / ₄ "	10'-2 ³ / ₄ "	4'-10"	42	
6'-0"	4'-6"	6'-0"	12'-5"	5'-6"	4'-9"	19'-9"	17'-1 ³ / ₄ "	11'-8 ³ / ₄ "	4'-11"	51	
7'-3"	5'-6"	6'-7"	14'-0"	6'-6"	5'-2"	21'-10 ¹ / ₂ "	21'-10 ⁵ / ₈ "	16'-3 ¹ / ₂ "	5'-7 ¹ / ₈ "	102	
8'-0"	6'-0"	7'-4"	14'-8"	8'-0"	6'-6"	21'-4 ³ / ₄ "	21'-4 ³ / ₄ "	15'-8"	5'-8 ³ / ₄ "	142	
8'-9"	6'-7"	8'-2"	15'-6 ¹ / ₄ "	8'-0"	7'-9"	22'-1 ¹ / ₂ "	22'-1 ¹ / ₂ "	15'-7 ¹ / ₂ "	6'-0"	168	
9'-0"	6'-9"	8'-2"	15'-7 ¹ / ₂ "	8'-6"	8'-0"	23'-3 ¹ / ₂ "	23'-3 ¹ / ₂ "	16'-7 ¹ / ₂ "	6'-2"	190	
10'-0"	7'-6"	8'-9"	16'-2 ¹ / ₂ "	10'-0"	8'-6"	24'-0 ⁵ / ₈ "	24'-0 ⁵ / ₈ "	17'-1 ¹ / ₂ "	6'-5 ¹ / ₈ "	280	
11'-0"	8'-3"	9'-4"	17'-5"	11'-0"	8'-8"	24'-9 ¹ / ₄ "	24'-9 ¹ / ₄ "	17'-3 ³ / ₄ "	6'-11 ¹ / ₂ "	390	
*12'-6"	9'-4"	11'-6"	19'-1"	14'-3"	10'-0"	23'-3"	23'-3"	14'-10"	7'-11"	610	
*13'-4"	10'-0"	12'-6"	20'-2"	15'-4"	10'-0"	26'-1 ³ / ₄ "	26'-1 ³ / ₄ "	17'-5 ¹ / ₂ "	8'-2 ¹ / ₄ "	760	

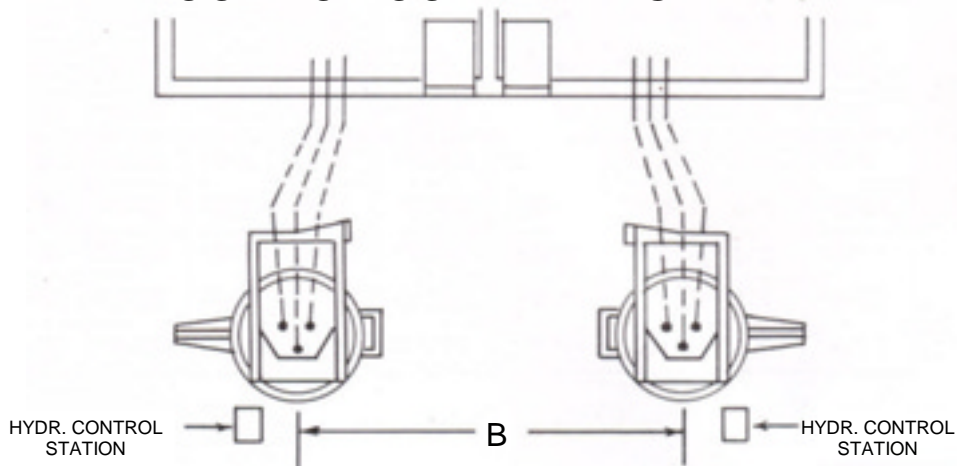
* Asterisk indicates charge with clam shell bucket.

Multiple Hydro-Arc Furnace Arrangements

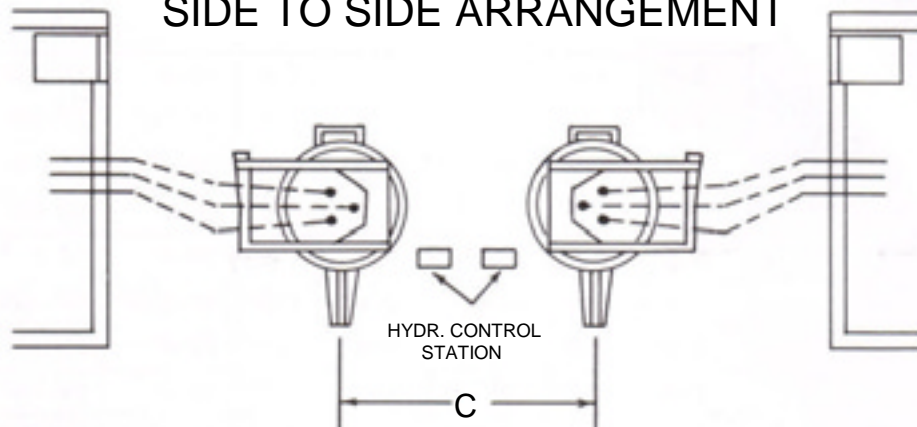
SPOUT TO SPOUT ARRANGEMENT



DOOR TO DOOR ARRANGEMENT



SIDE TO SIDE ARRANGEMENT



INSIDE SHELL		A	B	C
Dia.	Depth			
3'-4"	2'-6"	11'-10"	10'-0"	8'-10"
4'-0"	3'-0"	14'-0"	11'-8"	9'-8"
5'-0"	3'-9"	16'-0"	15'-3"	11'-6"
5'-8"	4'-4"	17'-0"	16'-5"	11'-10"
6'-0"	4'-6"	18'-3"	17'-7"	12'-2"
7'-3"	5'-6"	20'-6"	21'-0"	14'-8"
8'-0"	6'-0"	22'-4"	22'-9"	15'-8"
8'-9"	6'-7"	24'-4"	24'-8"	16'-6"
9'-0"	6'-9"	25'-2"	25'-2"	17'-0"
10'-0"	7'-6"	28'-6"	27'-0"	18'-6"
11'-0"	8'-3"	30'-8"	32'-6"	19'-6"
12'-6"	9'-4"	34'-4"	36'-8"	23'-6"
13'-4"	10'-0"	36'-2"	38'-3"	24'-4"

Whiting Equipment Canada Inc.



www.whiting.ca

Mike Cosoletto

350 Alexander Street
Welland, Ontario L3B 2R2 CDN
Tel (+1) 905-732-7585 ext. 271
Fax (+1) 905-732-2366
E-Mail mcosoletto@whiting.ca