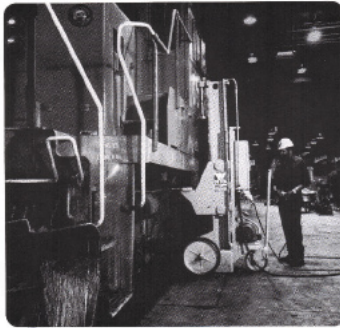




Whiting Equipment Canada Inc.
Portable Electric Jacks



**Portable
Electric
Jacks**



WHITING Portable Electric Jacks



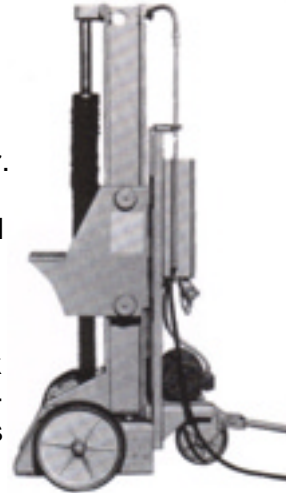
Jack models MA, MAE, MB and MC are similar in appearance but vary in low bracket height (2'3"-2'9") and effective lift (55"-67"). Jack adaptors are available in several sizes to fit your requirements.

Preferred throughout the world

Reliability. It is carefully engineered into every portable jack bearing the WHITING name. A degree of reliability that has made WHITING the foremost manufacturer of portable jacks in the world. An outstanding design, painstaking parts selection, and top quality construction to help assure you that the WHITING portable jack will provide years of dependable service with a minimum of maintenance.

Rugged column assembly

WHITING portable electric jacks consist of a steel base containing a worm and worm gear. Welded to the base is a massive structural steel column assembly housing an alloy steel jack screw and aluminum bronze jack nut with precision machined buttress threads. The screw is keyed to the worm gear and is supported by a large thrust bearing. The jack nut travels on the screw and supports the lifting bracket. An all-welded frame further adds strength to the column assembly and results in a portable jack with dependable load-lifting capacity throughout the working ranges.



Interlock controls

A single operator manning a portable station can control simultaneous operation of any number of jacks. Each jack is also equipped with starter and push-buttons for individual operation. Because the WHITING jack is electric powered, there are no cumbersome air hoses.



Power lifting/power lowering

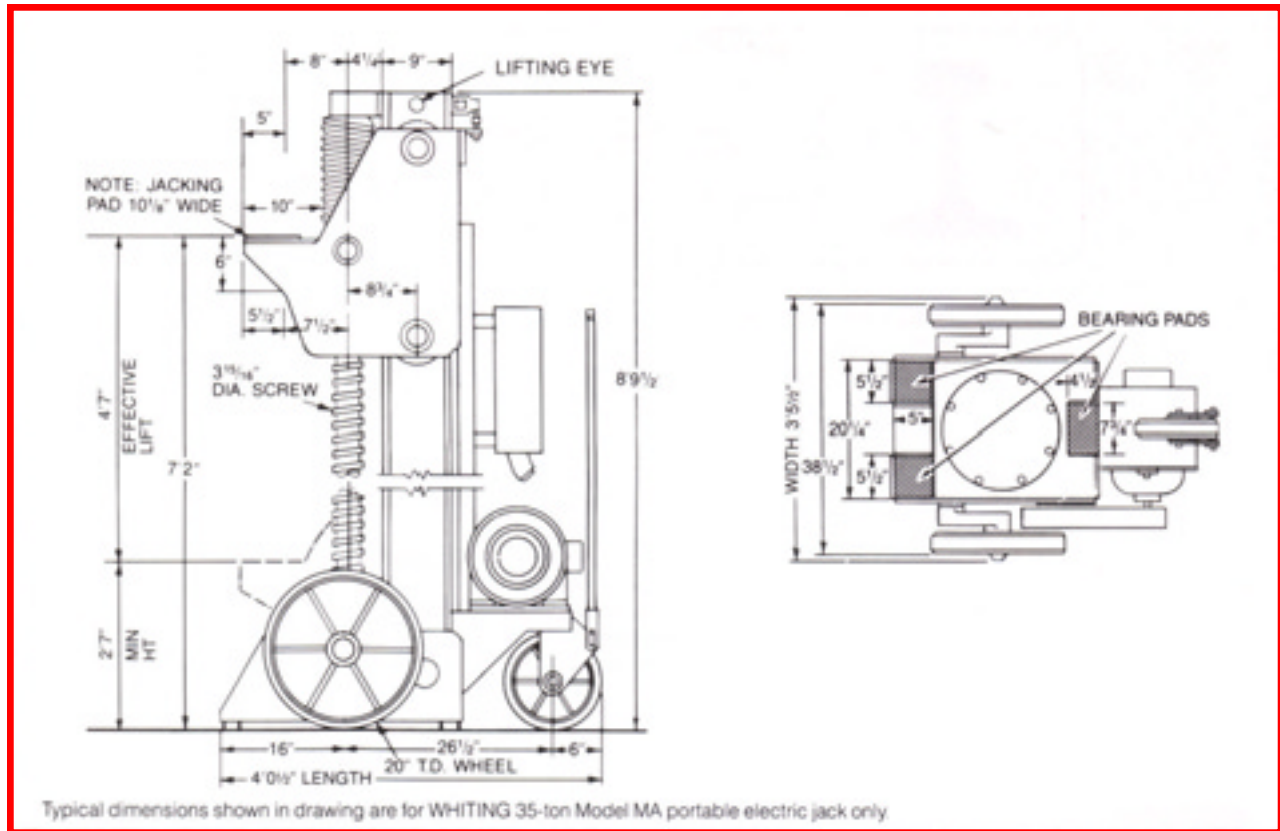
The combination of a reversible electric motor with integral disc brake, plus heavy duty gearing, and a motor disc brake contributes to the outstanding driving power of the WHITING portable electric jack. Power is required for both lifting and lowering.

Specialized bracket design

WHITING jacks can be equipped with a variety of special brackets to meet the requirements of dozens of unique lifting operations.

If you have a lifting requirement, consider WHITING portable electric jacks. Look into the world leader in portable jack technology...the Whiting Corporation.





Choose a WHITING® Portable Electric Jack designed to fit your requirements.

| Model | Capacity (metric ton) | HP (kW) | Speed I.P.M. (mm/min) | Effective Lift (mm) | Minimum Bracket Height (mm) | Screw Dia. (mm) | Height (mm) | Width (mm) | Length (mm) | Weight (kg) |
|-------|-----------------------|----------------|-----------------------|---------------------|-----------------------------|-------------------|---------------------|--------------------|--------------------|----------------|
| MA | 25 (22.5) | 5 (3.73) | 9 (229) | 4'7" (1397) | 2'7" (787) | 3-15/16" (100) | 8'9-1/2" (2680) | 3'5-1/2" (1054) | 4'0-1/2" (1232) | 3000 (1361) |
| MAL | 25 (22.5) | 5 (3.73) | 9 (229) | 4'7" (1397) | 2'3" (686) | 3-15/16" (100) | 8'9-1/2" (2680) | 3'5-1/2" (1054) | 4'0-1/2" (1232) | 3000 (1361) |
| MA | 35 (31.5) | 7.5 (5.59) | 9 (229) | 4'7" (1397) | 2'7" (787) | 3-15/16" (100) | 8'9-1/2" (2680) | 3'5-1/2" (1054) | 4'0-1/2" (1232) | 3000 (1361) |
| MAL | 35 (31.5) | 7.5 (5.59) | 9 (229) | 4'7" (1397) | 2'3" (686) | 3-15/16" (100) | 8'9-1/2" (2680) | 3'5-1/2" (1054) | 4'0-1/2" (1232) | 3000 (1361) |
| MB | 50 (45) | 12.5 (9.32) | 8 (203) | 5'7" (1702) | 2'9" (838) | 4-15/16" (125) | 11'2-7/8" (3426) | 3'5-1/2" (1054) | 4'5-7/8" (1368) | 4000 (1814) |
| MC | 60 (54) | 15 (11.20) | 8.5 (216) | 5'7" (1702) | 2'9" (838) | 4-15/16" (125) | 11'2-7/8" (3426) | 3'5-1/2" (1054) | 4'5-7/8" (1368) | 4600 (2087) |

Contact factory for alternate lift of bracket heights.

NOTE: Speeds based on 230/460 VAC - 3 Phase - 60 Hertz.
Speeds at 50 Hertz are 5/6 that shown.

IN ORDER TO PREPARE A QUOTATION, PLEASE SPECIFY YOUR EXACT ELECTRICAL CHARACTERISTICS.



**If it moves on rails
you need WHITING.®**

WHITING systems engineering provides both standard and custom equipment for railroads, mass transit systems, car and locomotive builders, car repair shops and industrial rail applications, including:

DROP TABLES
CAR HOISTS
BODY STANDS
LIFT TABLES
PORTABLE ELECTRIC JACKS
LOCOMOTIVE WASHERS
PASSENGER CAR WASHERS
INTERIOR CAR WASHERS
TURNABLES

LOCOMOTIVE SANDING SYSTEMS
CAR PROGRESSION SYSTEMS
TRANSFER CARS
RIPJACK® RAILCAR JACKING ASSEMBLIES
TRANSFER TABLES
OVERHEAD AND GANTRY CRANES
MONORAILS
JIB CRANES



Transfer tables to any capacity.



Special washers for special applications.

Whiting Equipment Canada Inc.



www.whiting.ca

Richard Breznik

350 Alexander Street
Welland, Ontario L3B 2R2 CDN
Tel (+1) 905-732-7585 ext. 256
Fax (+1) 905-732-2366
E-Mail rbreznik@whiting.ca