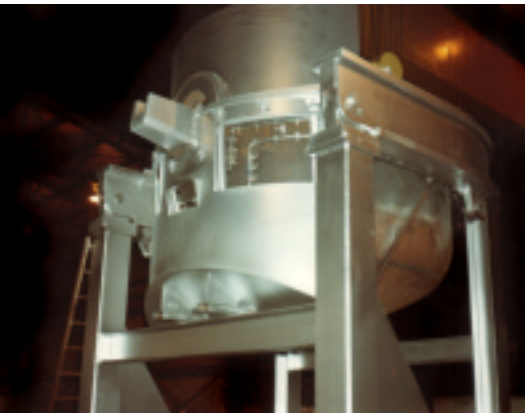




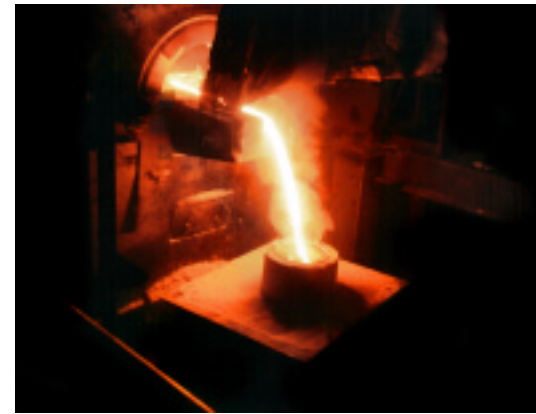
www.whiting.ca



Tilt pouring mineral fusion furnace with a 10 foot inner diameter removable shell for quick product changes – Front View



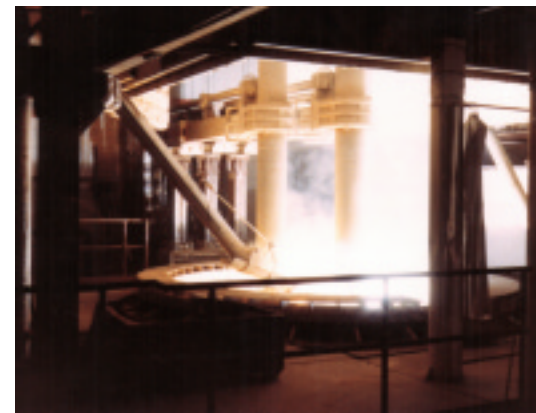
Removable shell mineral fusion furnace base assembly – Rear View



Closely controlled tilt pouring capability of a special application fused block casting mineral furnace



Tilt pouring of molten mineral oxides into a water-cooled mold



Canopy style fume capture system on a 10 foot inner shell diameter electric arc furnace application with "Power-On-Tilt"



"Doghouse" style fume capture system employed on a 20 foot inner shell diameter arc furnace operation



Special processing applications equipment - water cooled "Higgins" type furnace shell for fused oxides