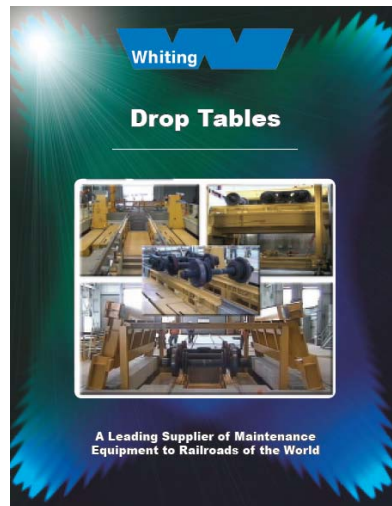




Whiting Equipment Canada Inc.
Drop Tables



WHITING DROP TABLES



Serving industry for over a century, Whiting Corporation has been instrumental in the development of the Drop Table concept and is responsible for many of the added values and practical features found in today's modern systems.

In collaboration with major railroads since 1926, Whiting has designed and developed Drop Table mechanisms that can be found in almost any major heavy locomotive repair shop throughout the country...and the world.



SERVICE TRACK



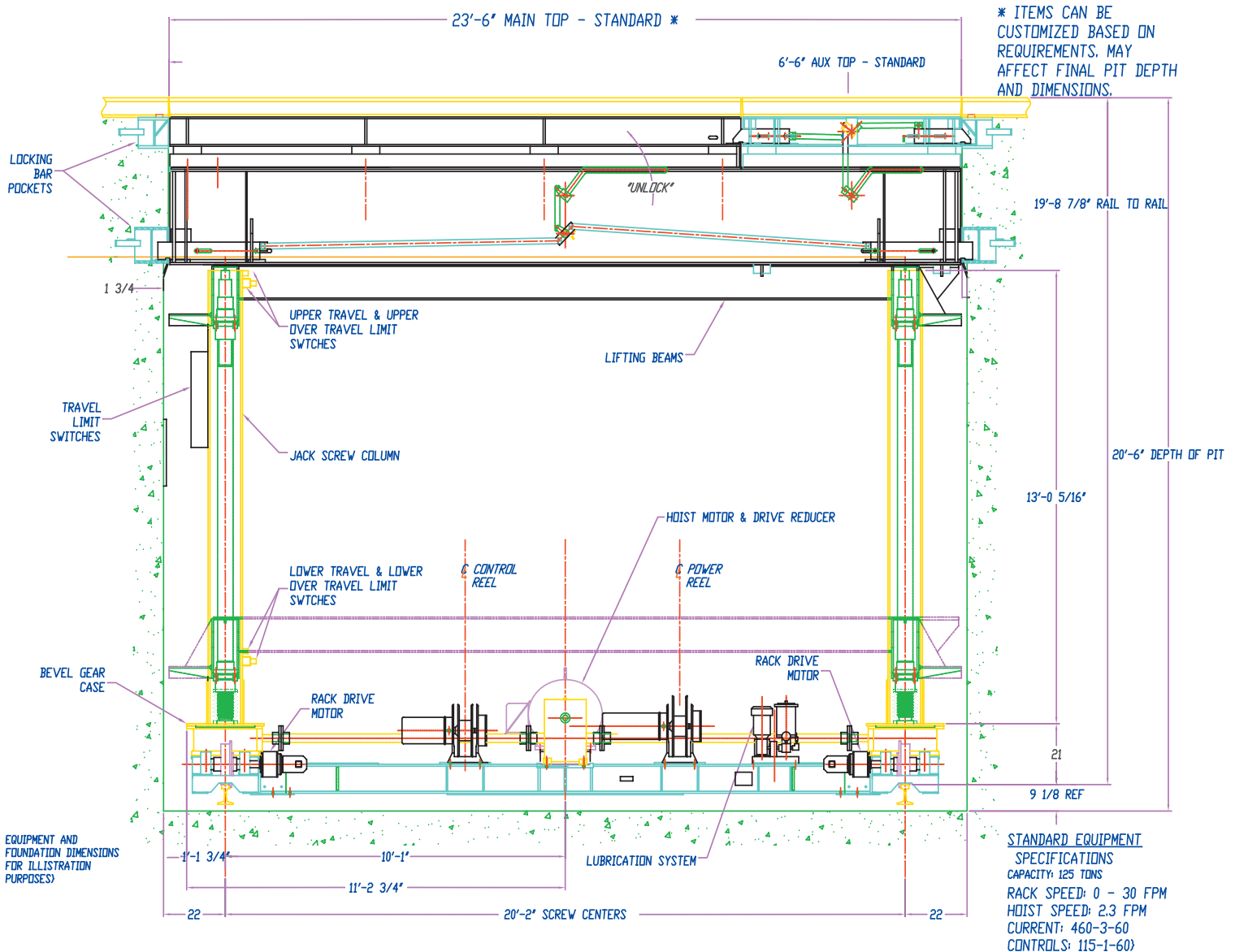
50 TON BODY SUPPORT
"HVL"



RELEASE TRACK

To remove drive wheels or trucks with a Drop Table, the locomotive is located and supported over the table top, where the trucks (or wheels) are disconnected, lowered, transferred laterally and raised to a release track. The trucks can then be moved to a maintenance area where inspection and repair can be performed quickly and efficiently.

INTERLOCK CONTROLS • PREFERRED THROUGHOUT THE WORLD



STANDARDIZED COMPONENTS

Standardized components are incorporated into our unique design which lowers the original cost and impacts favorably on future repair costs.

LOCKING DRIVE SCREWS

"Self-locking" buttress screws that remain stationary in the event of a drive mechanism malfunction...regardless of table load.

REMOTE OPERATED CONTROLS

Each Whiting design features remote operation, no need for personnel to be on or near the Drop Table while it is in use.

ADAPABLE DESIGNS

Whiting Drop Table designs are adaptable to satisfy almost any service requirement. Installations now serve pits from 4 feet to 26 feet in width; capacities range from 20 to 250 tons.



Whiting

WHITING provides both standard and custom equipment for railroads, mass transit systems, car and locomotive builders, car repair shops and industrial rail applications, including:

Drop Tables

Car Hoists

Body Stands

Portable Electric Jacks

Turntables

Locomotive Sanding Systems

Car Progression Systems

Transfer Cars

Ripjack Railcar Jacking Assemblies

Transfer Tables

Overhead and Gantry Cranes

**A Leading Supplier of Maintenance
Equipment to Railroads of the World**

Phone: (905) 732-7585 ext. 256

Fax: (905)-732-2366

Richard Breznik

E-mail: rbreznik@whiting.ca

www.whiting.ca