

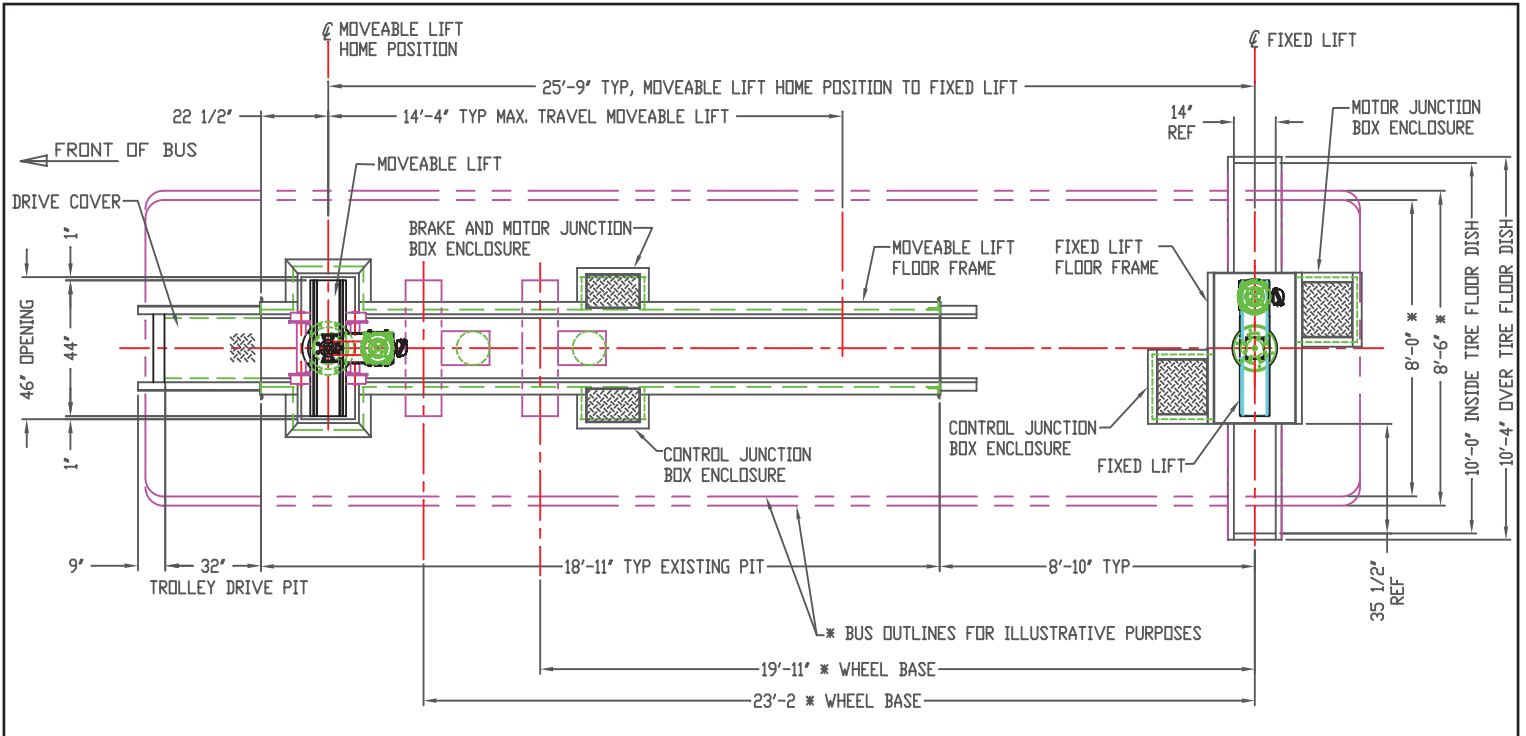


# WHITING



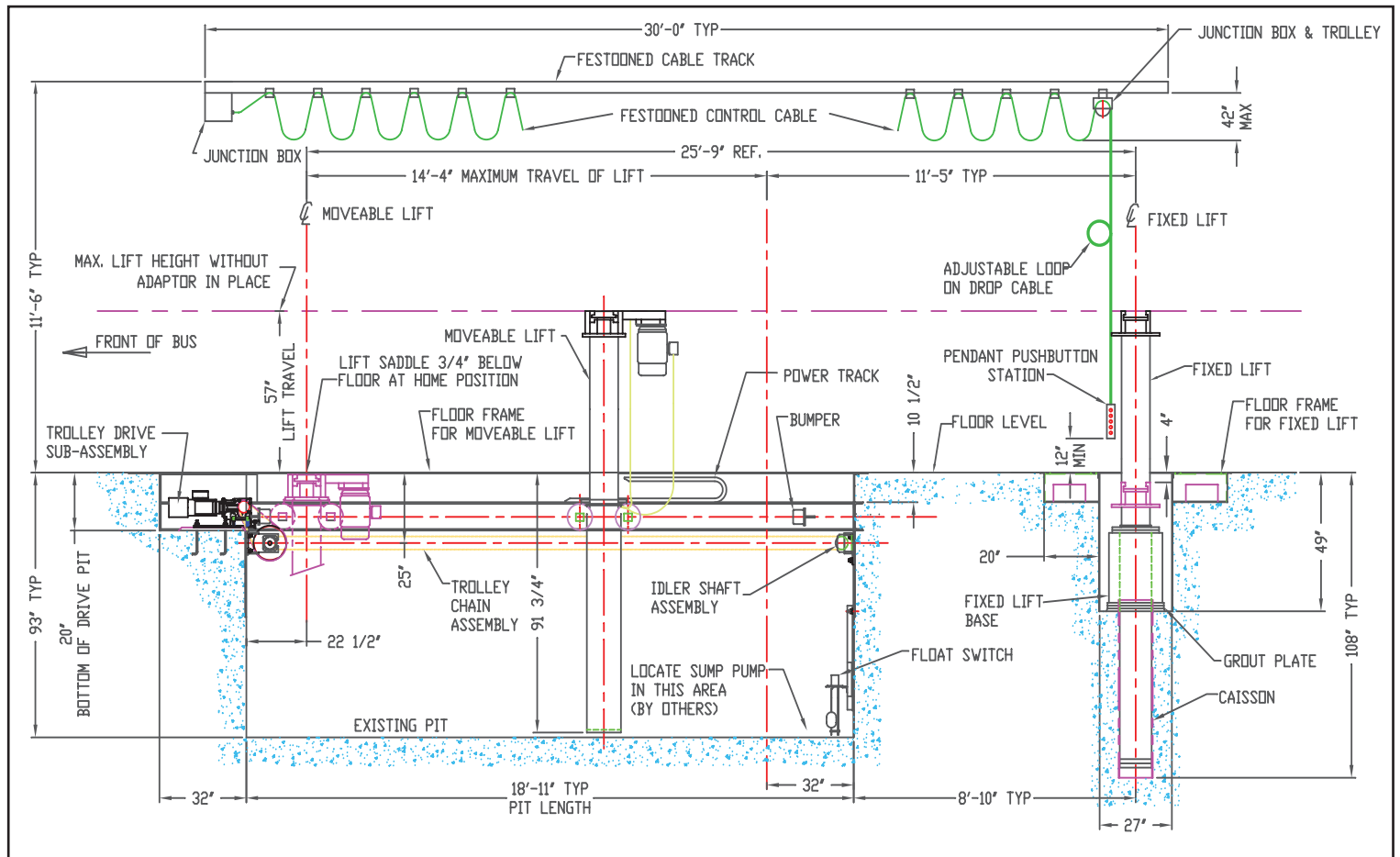
## ELECTRO-MECHANICAL BUS LIFT

DIMENSIONS SHOWN MAY BE CUSTOMIZED TO MEET REQUIREMENTS



# Plan View

DIMENSIONS SHOWN MAY BE CUSTOMIZED TO MEET REQUIREMENTS



# Elevation View



## **ELECTRO-MECHANICAL BUS LIFT**

### **FEATURES**

### **BENEFITS**

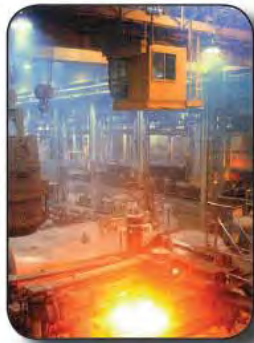
LIFTING WEIGHT.....	Capacity of 15 tons to lift latest vehicle designs.
EXPLOSION PROOF MOTORS.....	Motors and lead wires are sealed. Per National Electrical Code (NEC 2002) the control circuits use intrinsically safe wiring to operate in garage environments.
SYNCHRONIZING, POSITIONING AND ENCODER.....	The lift position encoders are mounted on each lift to provide precise synchronization between the lifting columns. The loss of proper functionality on one sensor will sound an alarm. The override feature will enable the bus to be lowered to the floor.
RECESSED RAM HEADS.....	Allow both the fixed and movable ram heads to be lowered below, or flush, with the maintenance floor.
BUTTRESS THREAD LIFT SCREW AND NUT.....	Design is more efficient than using acme threads. The result is a reduction in frictional loading, heat, wear and maintenance.
OIL IMMERSED SCREW AND LIFT NUT.....	Lubrication is provided to both lift and follower nuts when the unit is in the lowered position. This feature eliminates the need for an internal looped grease hose between the ram, guide and column tubes.
BACK-UP FOLLOWER NUT.....	This safety feature acts as a backup to the main lifting nut.
HEAD JAMMING SENSOR.....	The lowering motion of the lift system is stopped when either of the heads are jammed and unable to lower the bus. When activated this system operates only in the lifting mode.
UPPER/LOWER SENSORS.....	These devices will stop the lift system when either the upper or lower travel limits are reached.
HEAD MOUNTED ELECTRONIC SENSORS.....	This design feature eliminates the need for internally looped control wires between the ram, guide and column tubes.
TROLLEY DRIVE TORQUE LIMITER.....	Eliminates back driving or damage of the trolley drive gear motor when the lift is being positioned to match the bus dimensions.
FLOAT SWITCH.....	If water in the pit rises to a preset high water mark, this switch will shutdown the system to protect the motor, clutch and electronics. A light on the control panel will indicate that this safety feature has been activated.



350 Alexander Street, Welland, ON, L3B 2R2

**1-800-407-3384**

**rbreznik@whiting.ca**  
**www.whiting.ca**



**OVERHEAD CRANES**  
**TRANSPORTATION LIFTING EQUIPMENT**

**OEM REPLACEMENT PARTS**  
**24/7 SERVICE & MAINTENANCE**