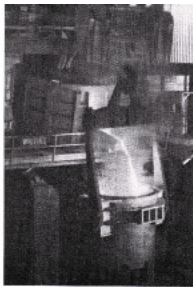




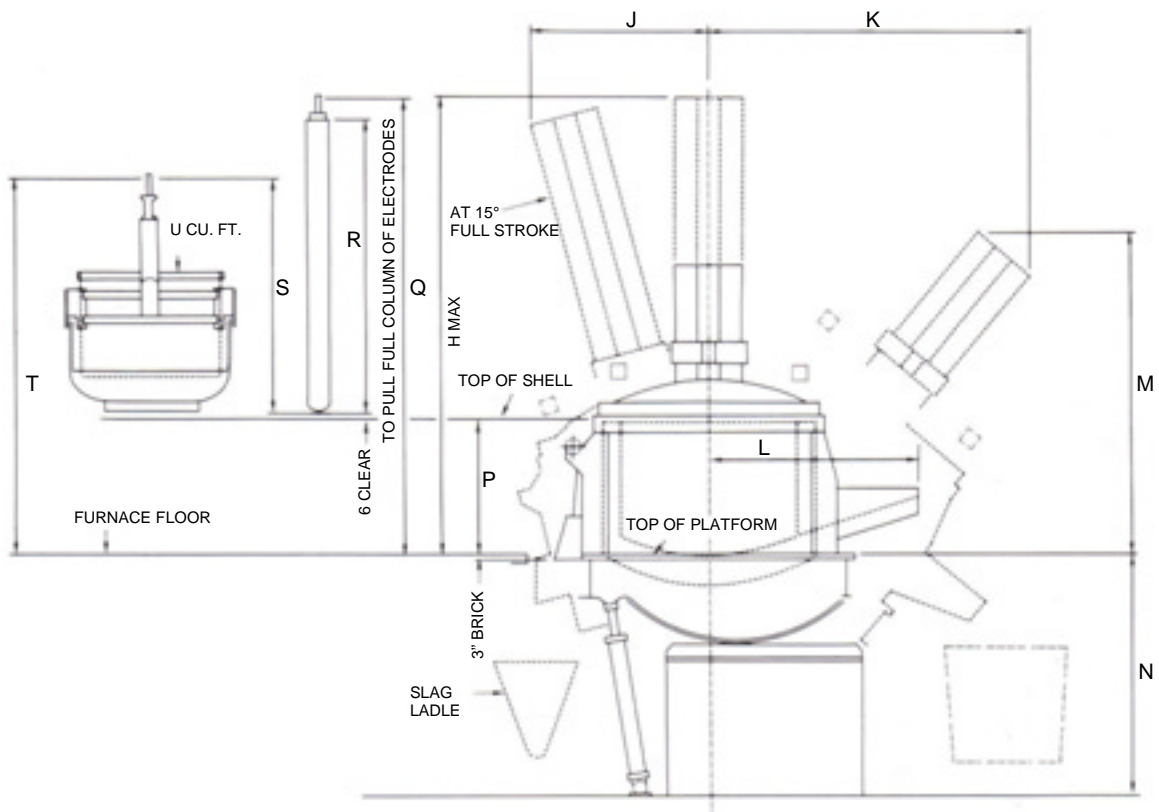
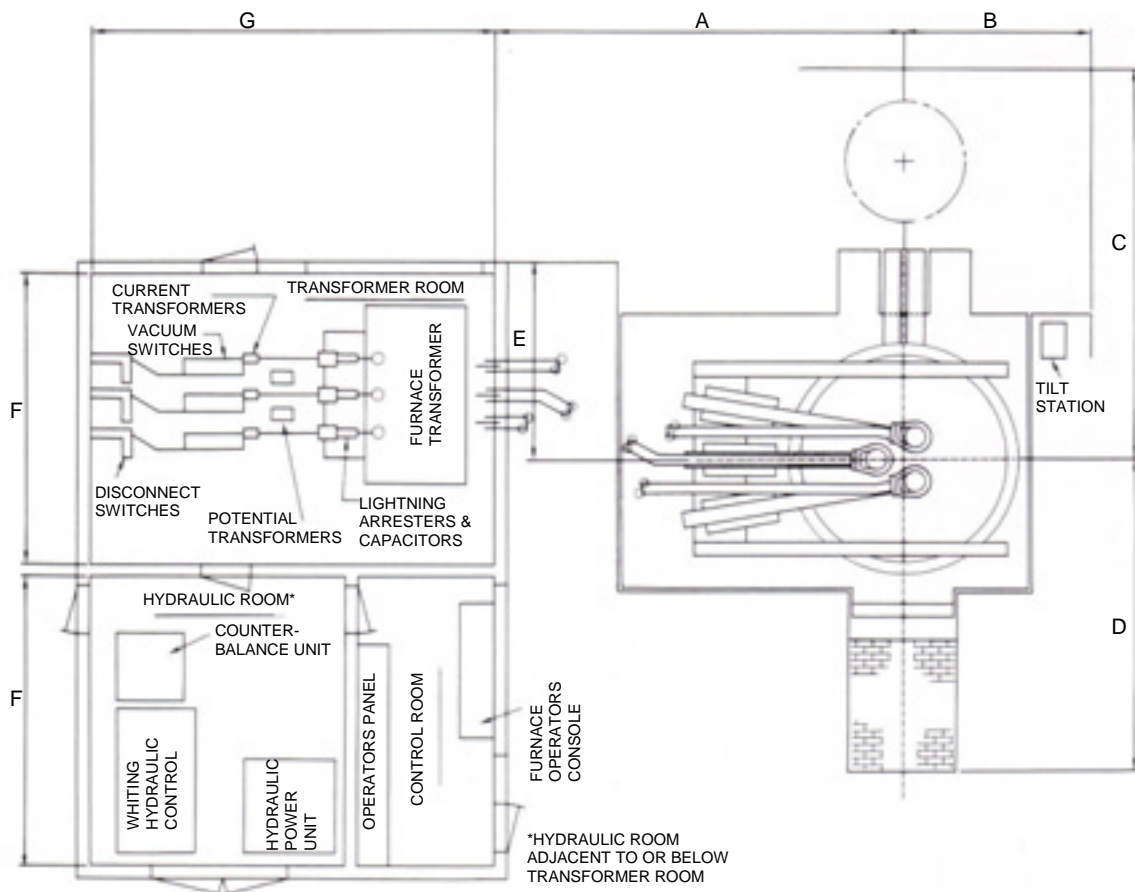
**Whiting Equipment Canada Inc.**  
Dimensions for Large Foundry and Mill Type  
Whiting Hydro-Arc Furnaces

---



**DIMENSIONS FOR  
LARGE FOUNDRY  
AND MILL TYPE  
WHITING HYDRO-ARC®  
FURNACES**

BULLETIN EF-115 B/A



## PRELIMINARY LAYOUT DIMENSIONS FOR HYDRO-ARC® INSTALLATIONS

INSIDE SHELL		A	B	C	D	E	F	G	H	J	K
DIA.	DEPTH										
12'-6	9'-9	24'-0	11'-3	23'-3	18'-6	14'-1	20'-0	24'-0	27'-5	10'-4	19'-5
13'-6	10'-5	25'-0	12'-3	24'-9	19'-6	14'-1	20'-0	24'-0	31'-2	11'-7	22'-0
14'-0	11'-0	25'-6	12'-6	25'-3	20'-0	14'-1	20'-0	24'-0	32'-1	12'-0	22'-9
15'-0	11'-10	26'-6	13'-6	26'-9	21'-0	15'-2	22'-0	26'-0	33'-11	12'-10	24'-2
16'-0	11'-11	27'-6	14'-3	28'-0	22'-0	15'-2	22'-0	26'-0	34'-2	12'-11	24'-0
17'-0	12'-4	28'-6	15'-0	29'-6	23'-0	15'-9	22'-0	26'-0	36'-0	13'-8	25'-5
18'-0	12'-5	29'-9	15'-9	30'-9	24'-0	16'-4	22'-0	26'-0	36'-5	14'-1	25'-11
19'-0	12'-6	30'-9	16'-9	32'-3	25'-0	16'-4	22'-0	26'-0	36'-8	14'-2	26'-1
20'-0	13'-4	31'-9	17'-6	33'-6	26'-0	16'-4	22'-0	26'-0	38'-5	14'-8	27'-1
21'-0	14'-5	32'-9	18'-3	35'-0	27'-0	17'-4	24'-0	28'-0	40'-8	15'-7	28'-7
22'-0	14'-7	33'-9	19'-0	36'-3	28'-0	18'-4	24'-0	28'-0	41'-0	15'-7	28'-8
23'-0	15'-1	35'-0	20'-0	37'-6	29'-0	18'-4	26'-0	30'-0	41'-5	15'-9	25'-11
24'-0	15'-3	36'-0	20'-9	39'-0	30'-0	18'-8	26'-0	30'-0	41'-11	16'-2	26'-4
25'-0	15'-4	37'-0	21'-6	40'-3	31'-0	19'-8	28'-0	32'-0	42'-1	16'-3	26'-5
26'-0	15'-5	38'-0	22'-3	41'-9	32'-0	19'-8	28'-0	32'-0	42'-4	16'-3	26'-6
28'-0	15'-10	40'-0	24'-0	44'-6	34'-0	20'-8	30'-0	34'-0	42'-10	16'-7	23'-10
30'-0	15'-11	42'-3	25'-9	47'-3	36'-0	20'-8	30'-0	34'-0	43'-3	16'-8	24'-1
32'-0	16'-0	44'-3	27'-3	50'-0	38'-0	20'-8	30'-0	34'-0	43'-8	16'-9	24'-2

INSIDE SHELL		L	M	N	P	Q	R	S	T	CU. FT. U
DIA.	DEPTH									
12'-6	9'-9	12'-6	19'-7	14'-6	8'-0	29'-10	17'-5	16'-5	24'-11	575
13'-6	10'-5	13'-6	22'-4	15'-0	8'-6	33'-9	20'-6	17'-3	26'-3	725
14'-0	11'-0	13'-6	22'-11	15'-6	8'-10	34'-9	21'-1	16'-5	25'-9	825
15'-0	11'-10	14'-6	24'-2	16'-0	9'-6	36'-7	22'-1	18'-0	28'-0	1075
16'-0	11'-11	15'-0	24'-5	17'-0	9'-6	36'-11	22'-4	18'-6	28'-6	1250
17'-0	12'-4	15'-6	25'-11	17'-6	9'-6	38'-7	23'-8	19'-6	29'-6	1450
18'-0	12'-5	16'-6	26'-5	18'-6	9'-6	39'-3	24'-3	20'-3	30'-3	1650
19'-0	12'-6	17'-0	26'-7	19'-0	9'-6	39'-8	24'-6	20'-10	30'-10	1875
20'-0	13'-4	17'-6	27'-8	20'-0	10'-3	41'-6	25'-6	22'-10	33'-7	2275
21'-0	14'-5	18'-6	29'-2	20'-6	11'-1	43'-9	26'-9	25'-6	37'-1	2775
22'-0	14'-7	19'-0	29'-5	21'-6	11'-1	44'-3	27'-1	25'-4	36'-11	3125
23'-0	15'-1	19'-6	30'-6	22'-0	11'-1	44'-9	27'-6	26'-2	37'-9	3500
24'-0	15'-3	20'-6	31'-0	23'-0	11'-1	45'-3	27'-10	27'-0	38'-7	3875
25'-0	15'-4	21'-0	31'-0	23'-6	11'-1	45'-6	28'-0	27'-8	39'-3	4250
26'-0	15'-5	21'-6	31'-3	24'-6	11'-1	45'-11	28'-3	28'-6	40'-1	4625
28'-0	15'-10	23'-0	32'-7	25'-6	11'-1	46'-8	28'-9	30'-2	41'-9	5450
30'-0	15'-11	24'-0	33'-0	27'-0	11'-1	47'-4	29'-2	32'-0	43'-7	6300
32'-0	16'-0	25'-6	33'-4	28'-6	11'-1	48'-1	29'-7	33'-9	45'-4	7225

## **Whiting Equipment Canada Inc.**



[www.whiting.ca](http://www.whiting.ca)

### **Mike Cosoletto**

350 Alexander Street  
Welland, Ontario L3B 2R2 CDN  
Tel (+1) 905-732-7585 ext. 271  
Fax (+1) 905-732-2366  
E-Mail [mcosoletto@whiting.ca](mailto:mcosoletto@whiting.ca)