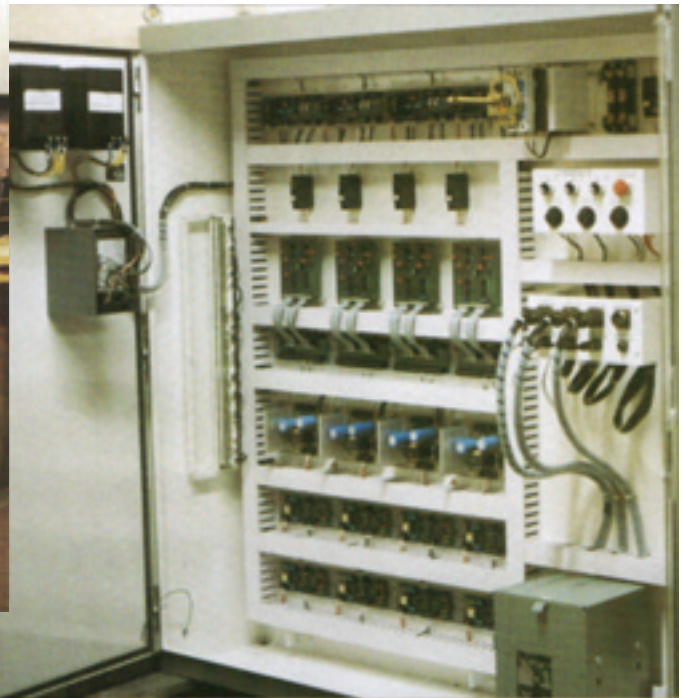




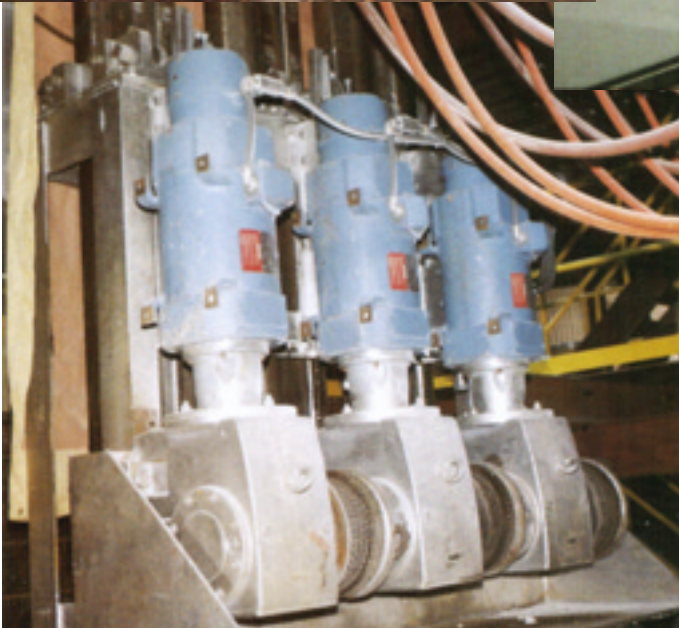
Electric Arc Furnace Regulators

Regulators for New Installations, Revamps of Existing Facilities and
Ladle Refining Stations

Electric Arc Furnace Tapping Into Ladle



Open Panel Hydraulic Regulator



*Electro-Mechanical
Winch Drum Assembly*

We design, manufacture and retrofit for Hydraulic Valve, DC Motor and Eddy Current Clutch Electro-Mechanical Winch Drives and 2 Pump Hydraulic Systems.

Volta-SAF Regulators are used to optimize Electric Arc Furnace production efficiency with rugged, reliable electronic based technologies. Over 75 units installed since 1980.

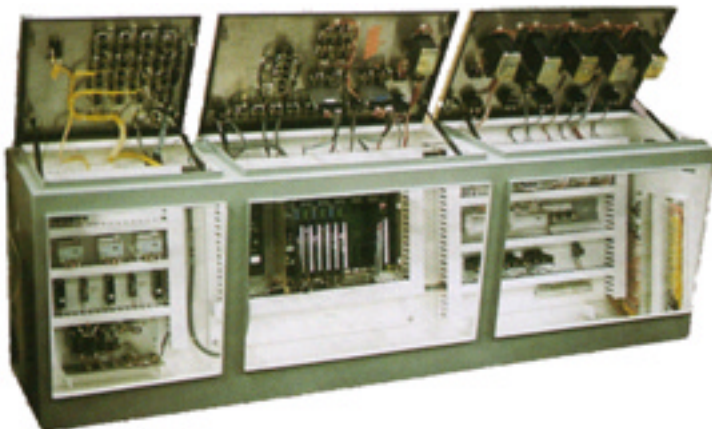
The Arc Furnace Industry relies on fully automated electrode regulators for maintaining consistent product quality in a highly competitive market. The industry requires absolute arc control using the latest state-of-the-art technology. Accordingly, the “Volta-SAP” regulator, in the digital or microprocessor configuration, utilizes sophisticated man/machine interfaces to meet these stringent requirements.

Advantages of Utilizing a Solid State Electrode Control System

Accurate determination and setting of the electrical data of the arc.
A measuring system Independent of continual reactance fluctuation that supplies precise arc data.
Control of the voltage or the resistance of the arc.
Rapid adjustment of the length of the arc under all operating conditions.
Suppression of furnace switch-off in the event of short circuits.
Clear set-point selection.
Independence from supply voltage fluctuation for accuracy of set points, measurement and control.
Control characteristics adaptable to suit various charge materials.
More active power is imparted to the charge during meltdown.
Input of set points can be easily taken over by computer process system.
Refractory lining wear can be improved due to greater arc control.
Less severe power fluctuations at the beginning of the meltdown phase.
Rapid attainment of a high power level.
Voltage fluctuations are much smaller.
High reliability.
Quiet operation.



Optional Operator Station



Volta-SAF Arc Regulators

The utilization of our control techniques in the Volta-SAF Regulator benefits the Arc Furnace Industry with high precision performance for flexible and reliable electrode control. Volta-SAF regulators can deliver:

- Close tolerance current/impedance regulation for ferrous, nonferrous, and mineral fusion.
- Continuous proportional error methodology to assure accurate arc control with optional tap selection.
- Analog, digital and microprocessor bases that offer maximum flexibility for all types of applications.
- Excellent service support.

Additionally, Volta-SAF in-house industrial expertise can integrate industrial controllers, computer interlaces and develop customized systems; from concepts to completed designs, from manufacturing to test and commissioning.

Applications

We can provide the Arc Furnace Industry an unyielding commitment to high quality:

- retrofitting existing DC motor, Eddy Current clutch, amplidrive, servo/proportional hydraulic systems, and two pump systems.
- delivering new installations designed for DC motor, 2 pump or servo-valve hydraulic systems.
- supplying accurate arc control through tap settings individually set for optimum efficiency in conjunction with continuous proportional error amplification.

Volta Furnaces (manufactured by Whiting Equipment Canada Inc.) have over 90 years experience in manufacturing engineered equipment for the heavy manufacturing industries.

For more detailed product and performance information, contact us:

Whiting Equipment Canada Inc.



Mike Cosoletto

350 Alexander Street
Welland, Ontario L3B 2R2 CDN
Tel (+1) 905-732-7585 ext. 271
Fax (+1) 905-732-2366
Email mcosoletto@whiting.ca